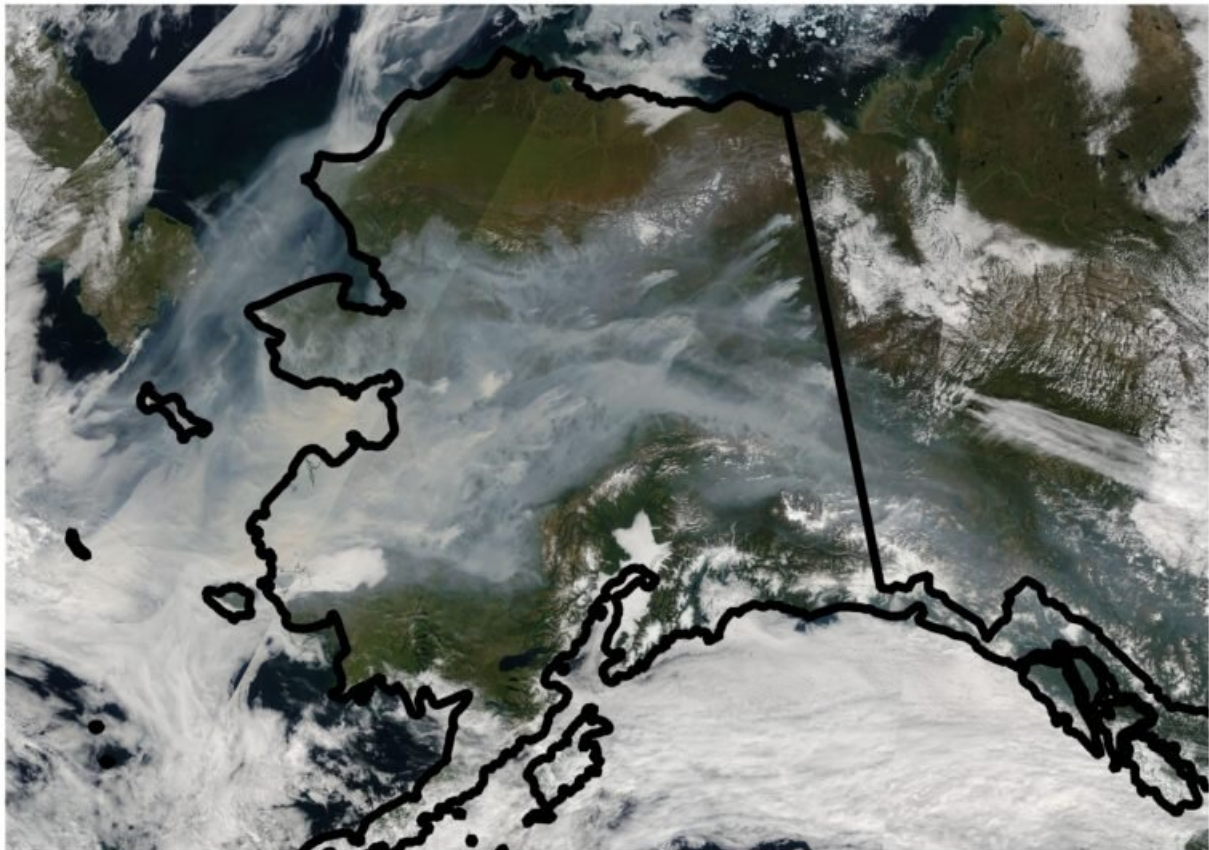


Team uses machine learning to help tell which wildfires will burn out of control

September 17 2019



A satellite image of Alaska captured in August 2005 shows the extent of smoke coverage from wildfires in the state's boreal forests. The blazes are likely to become large in exceptionally hot and dry conditions and when there's a high percentage of black spruce trees in the affected areas – key factors in a new predictive model developed by UCI scientists. Credit: NASA

An interdisciplinary team of scientists at the University of California, Irvine has developed a new technique for predicting the final size of a wildfire from the moment of ignition.

Built around a [machine learning algorithm](#), the model can help in forecasting whether a blaze is going to be small, medium or large by the time it has run its course—knowledge useful to those in charge of allocating scarce firefighting resources. The researchers' work is highlighted in a study published today in the *International Journal of Wildland Fire*.

"A useful analogy is to consider what makes something go viral in social media," said lead author Shane Coffield, a UCI doctoral student in Earth system science. "We can think about what properties of a specific tweet or post might make it blow up and become really popular—and how you might predict that at the moment it's posted or right before it's posted."

He and his colleagues applied that thinking to a hypothetical situation in which dozens of fires break out simultaneously. It sounds extreme, but this scenario has become all too common in recent years in parts of the western United States as [climate change](#) has resulted in hot and dry conditions on the ground that can put a region at high risk of ignition.

"Only a few of those fires are going to get really big and account for most of the burned area, so we have this new approach that's focused on identifying specific ignitions that pose the greatest risk of getting out of control," Coffield said.

The team used Alaska as a study area for the project because the state has been plagued over the past decade by a rash of concurrent fires in its [boreal forests](#), threatening human health and vulnerable ecosystems.

At the core of the UCI scientists' model is a "decision tree" algorithm.

By feeding it climate data and crucial details about [atmospheric conditions](#) and the types of vegetation present around the starting point of a [fire](#), the researchers could predict the final size of a blaze 50 percent of the time. A key variable is the vapor pressure deficit—just how little moisture there is in the area—during the first six days of a fire's existence. A second major consideration for Alaskan forests is the percentage of trees of the black spruce variety.

"Black spruce, which are dominant in Alaska, have these long, droopy branches that are designed—from an evolutionary perspective—to wick up fire," said co-author James Randerson, professor and Ralph J. & Carol M. Cicerone Chair in Earth System Science at UCI. "Their seeds are adapted to do well in a post-fire environment, so their strategy is to kill off everything else around them during a fire to reduce competition for their offspring."

He said Coffield was able to show that the fraction of black spruce within a 2.5-mile radius of the ignition site is an important factor in judging how big a fire will grow.

One advantage of this new method is speed, Coffield said. The algorithm "learns" with each new data point and can quickly figure out the critical thresholds for identifying large fires. It's possible for people to do this manually or by running simulations on each different ignition, he said, but the machine learning system's statistical approach is "really much faster and more efficient, especially for considering multiple fires simultaneously."

Faced with a climate change-induced jump in the number of wildfires expected each season, state, county and local firefighting authorities could benefit from some updated tools and techniques, Randerson noted. In addition to potentially saving lives and protecting property and crucial infrastructure, fire suppression efforts will also become increasingly

important in preserving the natural world.

"In places like Alaska, there's a need to limit the area affected by fire, because if we keep having these unusual, high-fire years, more carbon will be lost from the landscape, exacerbating warming," Randerson said. "If we let the fires run away, we could be in a situation where there's a lot of significant damage to both the climate system and ecosystems."

More information: Shane R. Coffield et al, Machine learning to predict final fire size at the time of ignition, *International Journal of Wildland Fire* (2019). [DOI: 10.1071/WF19023](https://doi.org/10.1071/WF19023)

Provided by University of California, Irvine

Citation: Team uses machine learning to help tell which wildfires will burn out of control (2019, September 17) retrieved 7 February 2026 from <https://phys.org/news/2019-09-team-machine-wildfires.html>

<p>This document is subject to copyright. Apart from any fair dealing for the purpose of private study or research, no part may be reproduced without the written permission. The content is provided for information purposes only.</p>
--