

OVER A CENTURY OF QUALITY SCIENTIFIC PUBLISHING



Rockefeller University Press (RUP) is committed to quality and integrity in scientific publishing. We use the latest technologies and carry out rigorous peer review, applying the highest standards of novelty, mechanistic insight, data integrity, and general interest to fulfill our mission of publishing excellent science. Our nonprofit journals were established by the research community, and editorial decisions and policies continue to be driven by scientists

who actively contribute to their fields, appreciate the value of peer review, and desire a better publication experience for all.

Rockefeller University Press journals are indispensable assets to comprehensive life sciences collections at institutions that are engaged in cutting-edge research and train future generations of capable scientists.



Journal of Cell Biology (JCB)

JCB publishes advances in any area of basic cell biology as well as applied cellular advances in fields such as immunology, neurobiology, metabolism, microbiology, developmental biology, and plant biology. Est. 1955

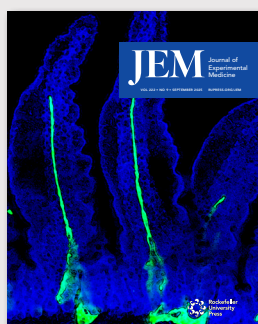
JCB Editor-in-Chief: **Jodi Nunnari**

Principal Investigator, Altos Labs Bay Area Institute of Science, and Distinguished Professor Emerita, University of California, Davis

Executive Editor: **Tim Spencer, PhD**

2026 | Vol. 225
12 print and online issues | Articles published daily
Print ISSN: 0021-9525 Online ISSN: 1540-8140
www.jcb.org

Total publications: ~**28,400** / total citations: ~**3.23M**
Impact Factor (IF): **6.4**
5-Year IF: **7.2**
IF rank in Cell Biology among primary research journals: **48**



Journal of Experimental Medicine (JEM)

JEM publishes papers providing novel conceptual insight into immunology, neuroscience, cancer biology, vascular biology, microbial pathogenesis, and stem cell biology. Est. 1896

JEM Editorial Board Co-Chairs:

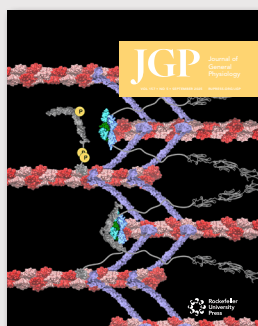
Carl Nathan R.A. Rees Pritchett Professor; Chairman of the Department of Microbiology and Immunology at Weill Cornell Medicine

Michel Nussenzweig Sherman Fairchild Professor, Senior Physician, and a Howard Hughes Investigator at The Rockefeller University

Executive Editor: **Shachi Bhatt, PhD**

2026 | Vol. 223
12 print and online issues | Articles published daily
Print ISSN: 0022-1007 Online ISSN: 1540-9538
www.jem.org

Total publications: ~**26,000** / total citations: ~**3M**
Impact Factor (IF): **10.6** 5-Year IF: **13.5**
IF rank in Medicine, Research and Experimental among primary research journals: **15**
IF rank in Immunology among primary research journals: **12**



Journal of General Physiology (JGP)

JGP publishes mechanistic and quantitative cellular and molecular physiology of the highest quality. Est. 1918

JGP Editor-in-Chief:

David Eisner

The British Heart Foundation Professor of Cardiac Physiology, University of Manchester

2026 | Vol. 158
6 print and online issues | Articles published daily
Print ISSN: 0022-1295 Online ISSN: 1540-7748
www.jgp.org

Total publications: ~**9,500** / total citations: ~**497,000**
Impact Factor (IF): **2.9**
5-Year IF: **3.2**
IF rank in Physiology among primary research journals: **27**

2024 Journal Impact Factor, Journal Citation Reports (Clarivate Analytics, 2024). Total publications and citations gathered from Digital Science's Dimensions database July 2024.

LEARN MORE AND SPEAK TO YOUR REGIONAL CONTACT:

UNITED STATES AND CANADA

Rockefeller University Press subs@rockefeller.edu

LATIN AMERICA

ITMS Group info@itmsgroup.net

UK, SCANDINAVIA

Rob Turner Rob.Turner@kwglobal.com

FRANCE & FRENCH SWITZERLAND

Estelle Saevansson Estelle.Saevansson@kwglobal.com

ITALY, PORTUGAL, GREECE

Barbara Valcelli Barbara.Valcelli@kwglobal.com

GERMANY, AUSTRIA, SWITZERLAND

Ulrike Wiechern Ulrike.Wiechern@kwglobal.com

BELGIUM, NETHERLANDS, LUXEMBOURG, SPAIN

Fanny Monegro Fanny.Monegro@kwglobal.com

DACH & CENTRAL EASTERN EUROPE

Toni Aganovic Toni.Aganovic@kwglobal.com

MIDDLE EAST, AFRICA

Eyad Mohammed Eyad.Mohammed@kwglobal.com

INDIA, SRI LANKA, BANGLADESH, PAKISTAN

Chandrima Roy Chandrima.Roy@kwglobal.com

CHINA

Charlesworth China info@charlesworth.com.cn

TAIWAN, HONG KONG, SOUTHEAST ASIA, AUSTRALIA, NEW ZEALAND

Tammy Chang Tammy.Chang@kwglobal.com

REPUBLIC OF KOREA

Shinwon Datanet pub@shinwon.co.kr

JAPAN

Kinokuniya journal-inquiry@kinokuniya.co.jp

Journal of Cell Biology (JCB)

is a broad peer-reviewed journal that publishes original findings on all aspects of cell biology. The editors consider papers reporting new cellular or molecular advances in any areas of basic cell biology as well as papers that describe applied cell biology in a variety of systems including, but not limited to, immunology, neurobiology, metabolism, virology, developmental biology, and plant biology. JCB welcomes all submissions that describe new findings of significant interest to cell biologists, regardless of the experimental approach.

JCB traces its history to the early 1950s when a small group of biologists began to explore intracellular anatomy using the emerging technology of electron microscopy at institutions including The Rockefeller Institute of Medicine, the predecessor of The Rockefeller University. Since JCB was established in 1955, the discipline of cell biology emerged and developed on its pages, including the first descriptions of numerous cellular functions and structures. Today it publishes new science that shapes the current conversations in the cell biology community and presents pathways for exploration.

“JCB is the gold standard. You should provide workshops to other journals’ editors and staff on how to do the job.”

Gregory C. Rogers, PhD

Professor, Cellular and Molecular Medicine
Associate Head, Faculty Development
University of Arizona

Journal of Cell Biology (JCB) is an essential addition to comprehensive life sciences collections at institutions engaged in cutting-edge research.



2026 | Vol. 225
12 print and online issues | Articles published daily
Print ISSN: 0021-9525 | Online ISSN: 1540-8140
www.jcb.org

JCB Editor-in-Chief: **Jodi Nunnari**
Principal Investigator, Altos Labs Bay Area
Institute of Science, and Distinguished Professor
Emerita, University of California, Davis
Executive Editor: **Tim Spencer, PhD**

Total publications: **~28,400**
Total citations: **~3.23M**
Impact Factor (IF): **6.4**
5-Year IF: **7.2**
IF rank in Cell Biology among
primary research journals: **48**

2025 Journal Impact Factor, Journal Citation Reports (Clarivate Analytics, 2025). Total publications and citations gathered from Digital Science's Dimensions database July 2025.

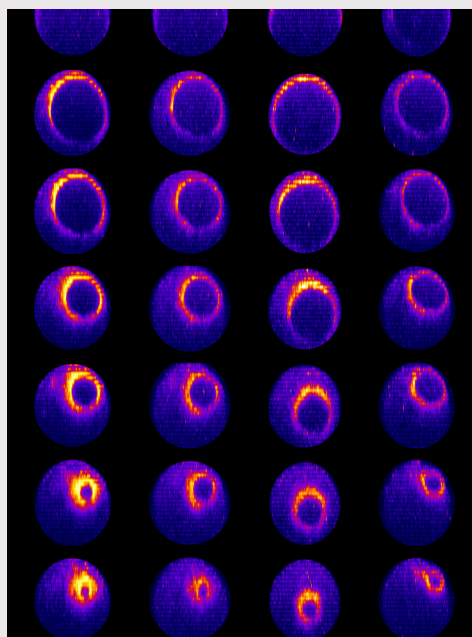


Image: © Lebedev et al., 2025. <https://doi.org/10.1083/jcb.202405182>

LEARN MORE AND SPEAK TO YOUR REGIONAL CONTACT:

UNITED STATES AND CANADA

Rockefeller University Press subs@rockefeller.edu

LATIN AMERICA

ITMS Group info@itmsgroup.net

UK, SCANDINAVIA

Rob Turner Rob.Turner@kwglobal.com

FRANCE & FRENCH SWITZERLAND

Estelle Saevarsson Estelle.Saevarsson@kwglobal.com

ITALY, PORTUGAL, GREECE

Barbara Valcelli Barbara.Valcelli@kwglobal.com

GERMANY, AUSTRIA, SWITZERLAND

Ulrike Wiechern Ulrike.Wiechern@kwglobal.com

BELGIUM, NETHERLANDS, LUXEMBOURG, SPAIN

Fanny Monegro Fanny.Monegro@kwglobal.com

DACH & CENTRAL EASTERN EUROPE

Toni Aganovic Toni.Aganovic@kwglobal.com

MIDDLE EAST, AFRICA

Eyad Mohammed Eyad.Mohammed@kwglobal.com

INDIA, SRI LANKA, BANGLADESH, PAKISTAN

Chandrima Roy Chandrima.Roy@kwglobal.com

CHINA

Charlesworth China info@charlesworth.com.cn

TAIWAN, HONG KONG, SOUTHEAST ASIA, AUSTRALIA, NEW ZEALAND

Tammy Chang Tammy.Chang@kwglobal.com

REPUBLIC OF KOREA

Shinwon Datanet pub@shinwon.co.kr

JAPAN

Kinokuniya journal-inquiry@kinokuniya.co.jp

Journal of Experimental Medicine (JEM)

is a broad journal that publishes papers providing novel conceptual insight into immunology, cancer biology, vascular biology, microbial pathogenesis, neuroscience, and stem cell biology. The editors are interested in original findings on all aspects of disease pathogenesis, and consider papers reporting novel therapeutic approaches. JEM strongly encourages submissions of human studies.

JEM was founded in 1896 at the Johns Hopkins School of Medicine by William Welch, the school's founder and also the first president of the Board of Scientific Directors of The Rockefeller Institute, the predecessor of The Rockefeller University, which acquired the journal in 1905. Celebrating its 125th anniversary in 2021, JEM has served as a distinguished venue for publication of studies that integrate disciplines within the field of pathogenesis.

"The JEM has always been a journal I rely on to learn the latest on immune mechanisms of host protection and disease pathogenesis for me. The journal has also been instrumental for my career. I have published key studies in JEM, which helped with my visibility and reputation in the field, and became the basis for me being hired as a faculty in my institution. I continue to submit our lab's exciting work there."

Akiko Iwasaki, PhD

Sterling Professor of Immunobiology and Molecular, Cellular, and Developmental Biology at Yale University; Investigator, Howard Hughes Medical Institute

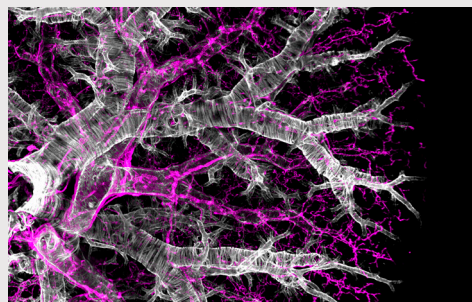
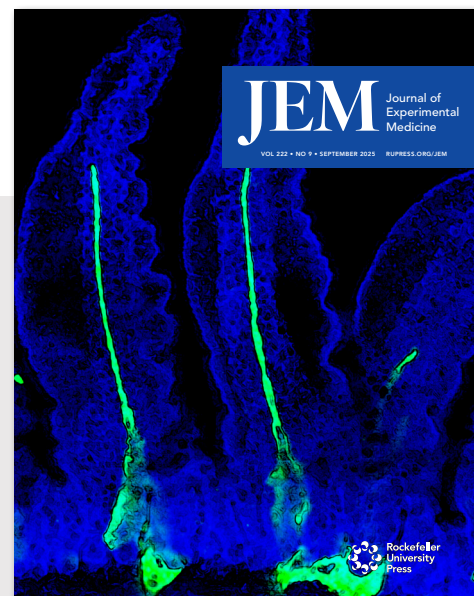


Image: © Cleary et al., 2025. <https://doi.org/10.1084/jem.20241359>



2026 | Vol. 223

12 print and online issues | Articles published daily
Print ISSN: 0022-1007 | Online ISSN: 1540-9538

www.jem.org

JEM Editorial Board Co-Chairs:

Carl Nathan R.A. Rees Pritchett Professor; Chairman of the Department of Microbiology and Immunology at Weill Cornell Medicine

Michel Nussenzweig Sherman Fairchild Professor, Senior Physician, and a Howard Hughes Investigator at The Rockefeller University

Total publications: ~26,000

Total citations: ~3M

Impact Factor (IF): 10.6

5-Year IF: 13.5

IF rank in Medicine, Research and Experimental among primary research journals: 12

IF rank in Immunology among primary research journals: 15

2025 Journal Impact Factor, Journal Citation Reports (Clarivate Analytics, 2025). Total publications and citations gathered from Digital Science's Dimensions database July 2025.

Journal of Experimental Medicine (JEM) is a core journal for comprehensive life sciences collections at institutions engaged in cutting-edge clinical, translational and basic sciences research.

LEARN MORE AND SPEAK TO YOUR REGIONAL CONTACT:

UNITED STATES AND CANADA

Rockefeller University Press subs@rockefeller.edu

LATIN AMERICA

ITMS Group info@itmsgroup.net

UK, SCANDINAVIA

Rob Turner Rob.Turner@kwgglobal.com

FRANCE & FRENCH SWITZERLAND

Estelle Saevarsson Estelle.Saevarsson@kwgglobal.com

ITALY, PORTUGAL, GREECE

Barbara Valcelli Barbara.Valcelli@kwgglobal.com

GERMANY, AUSTRIA, SWITZERLAND

Ulrike Wiechern Ulrike.Wiechern@kwgglobal.com

BELGIUM, NETHERLANDS, LUXEMBOURG, SPAIN

Fanny Monegro Fanny.Monegro@kwgglobal.com

DACH & CENTRAL EASTERN EUROPE

Toni Aganovic Toni.Aganovic@kwgglobal.com

MIDDLE EAST, AFRICA

Eyad Mohammed Eyad.Mohammed@kwgglobal.com

INDIA, SRI LANKA, BANGLADESH, PAKISTAN

Chandrima Roy Chandrima.Roy@kwgglobal.com

CHINA

Charlesworth China info@charlesworth.com.cn

TAIWAN, HONG KONG, SOUTHEAST ASIA, AUSTRALIA, NEW ZEALAND

Tammy Chang Tammy.Chang@kwgglobal.com

REPUBLIC OF KOREA

Shinwon Datanet pub@shinwon.co.kr

JAPAN

Kinokuniya journal-inquiry@kinokuniya.co.jp

Journal of General Physiology

(JGP) publishes peer-reviewed mechanistic and quantitative molecular and cellular physiology of the highest quality. Original work in *JGP* elucidates basic biological, chemical, or physical mechanisms of broad physiological significance. Editors welcome papers on membrane protein physiology; protein structure and dynamics; lipid and membrane biophysics; cell mechanics and contractile systems; and intracellular and intercellular signaling.

Founded in 1918 by Jacques Loeb, then a member of The Rockefeller Institute, *JGP* has provided a crucial forum for scientists from many disciplines to contribute to the growing pool of physiological knowledge, including the first measurements of “gating currents” associated with movement of the activation gates of voltage-activated sodium channels, “opening the gate” to a molecular understanding of the mechanisms whereby these channels function. Today it continues its tradition of publishing rigorous and exciting science and has also established early career programs to help to nurture future generations of independent researchers.

“I really like the editorial process at JGP. It’s rigorous and exacting, but friendly. There seems to be a sense of responsibility to moving the field forward. Every time I submit a paper to JGP, I feel I learn something new about my own data. The end result is a better paper—always!”

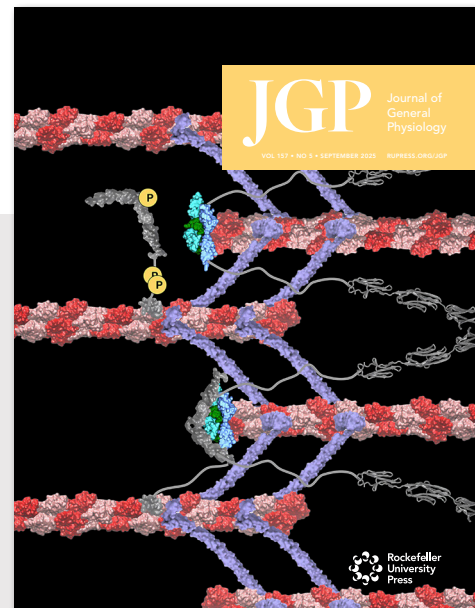
Tim Jegla, PhD

Associate Professor of Biology,
Department of Biology,
Penn State Eberly College of Science



Image: © Yuriy Bobkov. <http://doi.org/10.1085/jgp.202413740>

Journal of General Physiology (JGP) is a necessary addition to comprehensive life sciences collections at institutions engaged in cutting-edge research.



2026 | Vol. 158

6 print and online issues | Articles published daily
Print ISSN: 0022-1295 | Online ISSN: 1540-7748

www.jgp.org

JGP Editor-in-Chief:

David Eisner

The British Heart Foundation Professor of
Cardiac Physiology, University of Manchester

Total publications: **~9,500**

Total citations: **~497,000**

Impact Factor (IF): **2.9**

5-Year IF: **3.2**

IF rank in Physiology among
primary research journals: **27**

2025 Journal Impact Factor, Journal Citation Reports (Clarivate Analytics, 2025). Total publications and citations gathered from Digital Science's Dimensions database July 2025.

LEARN MORE AND SPEAK TO YOUR REGIONAL CONTACT:

UNITED STATES AND CANADA

Rockefeller University Press subs@rockefeller.edu

LATIN AMERICA

ITMS Group info@itmsgroup.net

UK, SCANDINAVIA

Rob Turner Rob.Turner@kwglobal.com

FRANCE & FRENCH SWITZERLAND

Estelle Saevarsson Estelle.Saevarsson@kwglobal.com

ITALY, PORTUGAL, GREECE

Barbara Valcelli Barbara.Valcelli@kwglobal.com

GERMANY, AUSTRIA, SWITZERLAND

Ulrike Wiechern Ulrike.Wiechern@kwglobal.com

BELGIUM, NETHERLANDS, LUXEMBOURG, SPAIN

Fanny Monegro Fanny.Monegro@kwglobal.com

DACH & CENTRAL EASTERN EUROPE

Toni Aganovic Toni.Aganovic@kwglobal.com

MIDDLE EAST, AFRICA

Eyad Mohammed Eyad.Mohammed@kwglobal.com

INDIA, SRI LANKA, BANGLADESH, PAKISTAN

Chandrima Roy Chandrima.Roy@kwglobal.com

CHINA

Charlesworth China info@charlesworth.com.cn

TAIWAN, HONG KONG, SOUTHEAST ASIA, AUSTRALIA, NEW ZEALAND

Tammy Chang Tammy.Chang@kwglobal.com

REPUBLIC OF KOREA

Shinwon Datanet pub@shinwon.co.kr

JAPAN

Kinokuniya journal-inquiry@kinokuniya.co.jp