




2026 Subscription Guide for Institutions



INSTITUTIONAL TIERED PRICING

	 JCB <small>Journal of Cell Biology</small>	 JEM <small>Journal of Experimental Medicine</small>	 JGP <small>Journal of General Physiology</small>
Subscription Type			
Online Tier 1	\$2,960	\$2,305	\$1,060
Online Tier 2	\$3,750	\$3,035	\$1,335
Online Tier 3	\$4,745	\$4,075	\$1,680
Online Tier 4	\$6,055	\$5,200	\$2,150
Online with Print Tier 1	\$6,710	\$5,135	\$2,485
Online with Print Tier 2	\$7,445	\$5,790	\$2,735
Online with Print Tier 3	\$8,165	\$6,525	\$3,065
Online with Print Tier 4	\$10,435	\$8,345	\$3,920

GENERAL INFORMATION

Librarian Portal

You have access to the Librarian Portal directly from the homepage of the Rockefeller University Press website. Here you can manage your IP addresses, gain access to usage statistics, and find updates about our journals and the Press in general. Please visit the portal at <https://rupress.org/journals>.

Archiving and Digital Preservation

All journals have been archived in fully searchable PDF format back to volume 1, issue 1. All articles published from January 1997 onwards are available in both HTML and PDF. Archived articles before 2008 are available with a current subscription. Subscription (Non-immediate OA) articles are published with a 12-month embargo. We participate in CLOCKSS and LOCKSS for long-term digital preservation.

Pricing Model

Prices for institutional subscriptions are based on a tiered system. The model has four tiers based on type of institution. Tiered pricing enables different segments of the STM community to enjoy full access to our journals at rates that are appropriate to their size, need, and likely usage. Please review the tier descriptions on page 3 for more information.

Our prices are established by our transparent pricing model, which allows us to fairly and transparently set prices based off the production of research articles in our journals. See our transparent pricing policy for further details: <https://rupress.org/journals/pages/transparent-pricing>

Read-and-Publish

Rockefeller University Press supports the publication of research articles as immediate Open Access. For librarians interested in supporting OA publishing through institutional arrangements, we offer Read-and-Publish agreements that provide for unlimited OA publishing for participating institutions, with no author article processing charges. If you are a consortium or institution interested in joining our Read-and-Publish program, please contact our subscriptions department and see here for more information: <https://rupress.org/journals/pages/rup-read-and-publish-agreements>

Consortium and Multisite Pricing

The prices in this guide refer to single sites only. Special pricing is available for an organization with multiple sites or a consortium of organizations. Contact Customer Service for more information at subs@rockefeller.edu.

Payment Instructions

All agency orders must be paid at institutional rates less the agent discount, and all subscriptions must be prepaid. All prices are subject to change without notice.

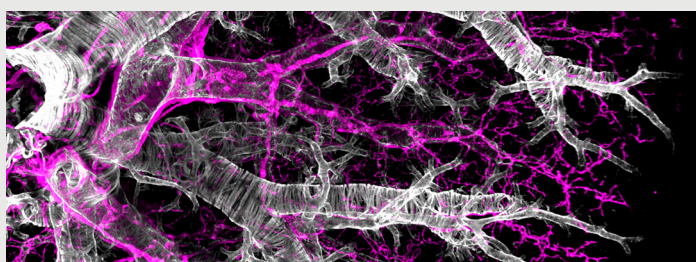
We accept payments by check, credit card, and bank/wire transfer/ACH.

Checks must be paid in US funds drawn on a US bank, made payable to Rockefeller University Press, and mailed to:

ROCKEFELLER UNIVERSITY PRESS
Lockbox 5108
JP Morgan Chase Lockbox Processing
4 Chase Metrotech Center, Fl 7 East
Brooklyn, NY 11245

For bank/wire transfer/ACH payment details, please e-mail subs@rockefeller.edu.

To arrange payment via credit card, please e-mail rupfinance@rockefeller.edu for instructions. Do not send credit card information via e-mail.



INFORMATION FOR SUBSCRIPTION AGENTS

Reference Numbers

We use two different numbers to manage subscriptions. If your system can store only one of our reference numbers, please store the Subscription Number. The Subscription Number is commonly referred to by agents as the Publisher's Identification Number (PID). It is the number used in the various message formats developed and maintained by the International Committee on Electronic Data Interchange for Serials (ICEDIS; see www.editeur.org/59/ICEDIS). The Subscription Number remains the same for the life of the subscription. Please include this number with renewal orders and in all customer service correspondence.

Electronic Submission of Orders

We encourage agents to submit orders electronically using the ICEDIS standard (see www.editeur.org/59/ICEDIS). Please contact our Subscription Office for details.

End-User Information

Please take careful note that Rockefeller University Press will not accept orders that lack the full name and address of the end-user institution along with the name and email address of a contact person. For sending print copies, we can accommodate a separate mailing address, such as that of a consolidation center.

Order Changes

Changes to subscription types (online-with-print to online and vice versa) can be made at any time. Please note that we cannot honor cancellations of 2025 subscriptions made after December 31, 2025.

Customer Service

We're here to help. Please contact Customer Service by mail, telephone, fax, or email with claims, mailing address changes, cancellations, and questions.

Visit our website for FAQs and the most up to date contact information: <https://rupress.org/journals>

Rockefeller University Press Subscriptions

1230 York Avenue, Box 183, Weiss 17th Floor
New York, NY 10065

For quotes/account maintenance

Email: subs@rockefeller.edu



MANAGING ONLINE ACCOUNTS

Access Guidelines

We do not require written site license agreements. Access guidelines can be found at <https://rupress.org/journals/pages/accessguidelines>. Please contact our Subscription Office if you require a written agreement.

IP Addresses

We manage the IP addresses of our subscribers through the IP Registry (<https://theipregistry.org/>), which is a repository of IP ranges that librarians can use to update their IP's for all participating publishers in one central place.

Participating agents are able to update the IP Registry on behalf of our mutual subscribers. Librarians can find instructions on using the IP Registry at: <https://rupress.org/journals/pages/ip-manage>

Account Maintenance

The site administrator can view COUNTER-compliant usage reports and verify IP addresses by signing in to their online account at <https://sitemaster.rupress.org/admin/login.aspx> with their username and password. Passwords can be reset from the login screen. If the e-mail address or username needs to be updated, or any other issues arise, contact Customer Service.

Offsite Access

Our straightforward and fair terms provide unlimited concurrent access to all authenticated users via:

- VPN access
- Affiliated user access
- Universal CASA
- Countrywide access
- Shibboleth
- OpenAthens
- CARSI

Learn more: <https://rupress.org/journals/pages/accessguidelines>

2026 PRINT PUBLICATION SCHEDULE

JCB JOURNAL OF CELL BIOLOGY

Vol.	#	Publication Date
225	1	Mon. Jan 5, 2026
225	2	Mon. Feb 2, 2026
225	3	Mon. Mar 2, 2026
225	4	Mon. Apr 6, 2026
225	5	Mon. May 4, 2026
225	6	Mon. Jun 1, 2026
225	7	Mon. Jul 6, 2026
225	8	Mon. Aug 3, 2026
225	9	Mon. Sep 7, 2026
225	10	Mon. Oct 5, 2026
225	11	Mon. Nov 2, 2025
225	12	Mon. Dec 7, 2026

JEM JOURNAL OF EXPERIMENTAL MEDICINE

Vol.	#	Publication Date
223	1	Mon. Jan 5, 2026
223	2	Mon. Feb 2, 2026
223	3	Mon. Mar 2, 2026
223	4	Mon. Apr 6, 2026
223	5	Mon. May 4, 2026
223	6	Mon. Jun 1, 2026
223	7	Mon. Jul 6, 2026
223	8	Mon. Aug 3, 2026
223	9	Mon. Sep 7, 2026
223	10	Mon. Oct 5, 2026
223	11	Mon. Nov 2, 2025
223	12	Mon. Dec 7, 2026

JGP JOURNAL OF GENERAL PHYSIOLOGY

Vol.	#	Publication Date
158	1	Mon. Jan 5, 2026
158	2	Mon. Mar 2, 2026
158	3	Mon. May 4, 2026
158	4	Mon. Jul 6, 2026
158	5	Mon. Sep 7, 2026
158	6	Mon. Nov 2, 2026

DETERMINING AN INSTITUTION'S TIER

TIER 1

Academic

- Technical, community, or associates level college (two-year)
- Undergraduate (baccalaureate) college
- Master's college/university
- Nursing or pharmacology school

Hospital

- Hospital or clinic not affiliated with a medical school

Medical

- Private practice office
- Clinic
- Residency program
- Allied health training program (chiropractic, physical therapy, etc.)

Public/Not-for-Profit

- Nonresearch public library
- Independent research library
- Health policy or advocacy office
- Small government or independent research laboratory, institute, or organization (<25 PhD-level researchers)
- Local or regional governmental agency or ministry (e.g., city or state public health authority)
- Not-for-profit charitable organization
- Professional society or trade union
- Industry trade association

Corporate

- For-profit company (fewer than 500 relevant FTEs, including researchers and sales and marketing personnel)

TIER 2

Academic

- Small doctoral university (awards up to 25 PhDs annually) not conferring medical/dental/veterinary degrees

Medical

- Medical/Dental/Veterinary school not associated with a university

Hospital

- Major teaching or research hospital (affiliated with a medical school and offering numerous residency programs)

Public/Not-for-Profit

- Mid-size not-for-profit government or independent research institute or organization (25–50 PhD-level researchers)
- Non-profit research institute or organization affiliated with an academic institution

Corporate

- For-profit company (500–1,499 relevant FTEs, including researchers and sales and marketing personnel)

TIER 3

Academic

- Small doctoral university (awards up to 25 PhDs annually) conferring medical/dental/ veterinary degrees
- Large doctoral university (awards >25 PhDs annually) not conferring medical/dental/ veterinary degrees

Medical

- Medical/Dental/Veterinary school associated with a Tier 3 small doctoral university
- Healthcare Network (e.g. VA Medical Centers)

Public/Not-for-Profit

- Large not-for-profit government or independent research institute or organization (51–100 PhD-level researchers)

Corporate

- For-profit company (1,500–2,999 relevant FTEs, including researchers and sales and marketing personnel)

TIER 4

Academic

- Large doctoral university (awards >25 PhDs annually) conferring medical/dental/veterinary degrees

Medical

- Medical/Dental/Veterinary school associated with a Tier 4 large doctoral university

Public/Not-for-Profit

- Not-for-profit government or independent research institute or organization (over 100 PhD-level researchers)

Corporate

- For-profit company (3,000 or more relevant FTEs, including researchers and sales and marketing personnel)

Consortium & Multisite Structure

An institutional subscription authorizes use at a localized site. A "site" is an organizational unit and may be academic or nonacademic. For organizations located in more than one city, each city must have a subscription. For organizations that are administered centrally, we generally consider all units, offices, campuses schools, and departments located within the same city as a single site. However, for organizations within the same city that are administered independently, each unit, office, campus, school, and department is considered to be a distinct site and must have its own subscription. Please email us at subs@rockefeller.edu if your organization needs a price quote for multiple sites.

TOOLS FOR DISCOVERY



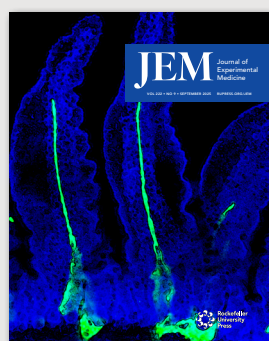
www.jcb.org

Journal of Cell Biology (JCB)

publishes advances in any area of basic cell biology as well as applied cellular advances in fields such as immunology, neurobiology, metabolism, microbiology, developmental biology, and plant biology. Est. 1955

2026 | Vol. 225
12 print and online issues
Print ISSN: 0021-9525
Online ISSN: 1540-8140

Total publications: ~**28,400**
Total citations: ~**3.23M**
Impact Factor (IF): **6.4**
5-Year IF: **7.2**
IF rank in Cell Biology among primary research journals: **48**



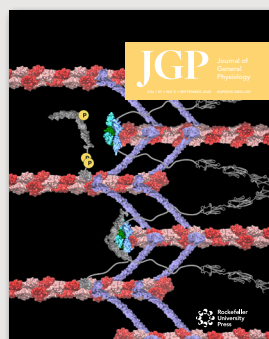
www.jem.org

Journal of Experimental Medicine (JEM)

publishes papers providing novel conceptual insight into immunology, neuroscience, cancer biology, vascular biology, microbial pathogenesis, and stem cell biology. Est. 1896

2026 | Vol. 223
12 print and online issues
Print ISSN: 0022-1007
Online ISSN: 1540-9538

Total publications: ~**26,000**
Total citations: ~**3.0M**
Impact Factor (IF): **10.6**
5-Year IF: **13.5**
IF rank in Medicine, Research and Experimental among primary research journals: **15**
IF rank in Immunology among primary research journals: **12**



www.jgp.org

Journal of General Physiology (JGP)

publishes mechanistic and quantitative cellular and molecular physiology of the highest quality. Est. 1918

2026 | Vol. 158
6 print and online issues
Print ISSN: 0022-1295
Online ISSN: 1540-7748

Total publications: ~**9,500**
Total citations: ~**497,000**
Impact Factor (IF): **2.9**
5-Year IF: **3.2**
IF rank in Physiology among primary research journals: **27**

2025 Journal Impact Factor, Journal Citation Reports (Clarivate Analytics, 2025). Total publications and citations gathered from Digital Science's Dimensions database July 2025.

Features

- Daily online article publication and downloadable figures, supplemental material, images, and videos
- Perpetual access to Full text HTML and PDFs
- Seamless off-campus and mobile access
- Split-Screen View: read an article while simultaneously viewing figures and tables, supplements, references, and related links and metrics
- Responsive design for mobile devices
- Email Alerts daily, weekly, and monthly
- COUNTER-compliant reports to track institutional usage
- Article-level metrics to track pageviews and PDF downloads, citations, shares, and Altmetric scores
- Digital archiving of all journal content in searchable PDFs back to volume 1, issue 1
- Archiving in LOCKSS/CLOCKSS and Portico
- Creative Commons licensing
- Full text, Crossref, and Google Scholar links directly from references
- NCBI database linking

For subscriptions, please contact your regional subscription office:

UNITED STATES AND CANADA

Rockefeller University Press subs@rockefeller.edu

LATIN AMERICA

ITMS Group info@itmsgroup.net

UK, SCANDINAVIA

Rob Turner Rob.Turner@kwgglobal.com

FRANCE & FRENCH SWITZERLAND

Estelle Saevansson Estelle.Saevansson@kwgglobal.com

ITALY, PORTUGAL, GREECE

Barbara Valcelli Barbara.Valcelli@kwgglobal.com

GERMANY, AUSTRIA, SWITZERLAND

Ulrike Wiechern Ulrike.Wiechern@kwgglobal.com

BELGIUM, NETHERLANDS, LUXEMBOURG, SPAIN

Fanny Monegro Fanny.Monegro@kwgglobal.com

DACH & CENTRAL EASTERN EUROPE

Toni Aganovic Toni.Aganovic@kwgglobal.com

MIDDLE EAST, AFRICA

Eyad Mohammed Eyad.Mohammed@kwgglobal.com

INDIA, SRI LANKA, BANGLADESH, PAKISTAN

Chandrima Roy Chandrima.Roy@kwgglobal.com

CHINA

Charlesworth China info@charlesworth.com.cn

TAIWAN, HONG KONG, SOUTHEAST ASIA, AUSTRALIA, NEW ZEALAND

Tammy Chang Tammy.Chang@kwgglobal.com

REPUBLIC OF KOREA

Shinwon Datanet pub@shinwon.co.kr

JAPAN

Kinokuniya journal-inquiry@kinokuniya.co.jp