



PROVIDING A FULL BUILDING
**ENVELOPE
SYSTEM**

Control Moisture Movement with
Our Patented Technology



Whatever Your Needs...

WE HAVE THE SOLUTION

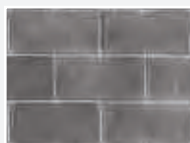
Methods of controlling moisture in building construction have become extremely important to owners, specifiers, and contractors. The objective of controlling moisture movement is to prevent building envelope problems before they occur – and save the building owner unnecessary maintenance and energy costs.

Fortunately, as building science has evolved, W. R. MEADOWS has developed many effective products which specifically meet the building designer's requirement for addressing and controlling moisture movement.

One of the more complicated issues today in building science is addressing moisture movement through the building envelope – both above and below ground. Not only does building design have to recognize that moisture movement will occur, but it must also factor in climate, workmanship, durability, and a range of other important variables.

Moisture can enter the building in a number of ways – underneath the concrete slab, through the below-grade vertical walls of the building foundation, and through the above-grade walls and roof of the structure. But W. R. MEADOWS is your guardian of the structure. Since 1926, we've been developing products that will protect your structure from this moisture infiltration.

About W. R. MEADOWS



W. R. MEADOWS building envelope products are part of the whole system design to help with energy efficiency and indoor air quality of a building. In addition, our products also will help contribute to LEED credits, providing a green option. Our materials are manufactured throughout the country, feature very low volatile organic content (VOC), and are manufactured using recycled materials.

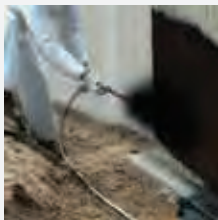
Our qualified building professionals are also available for visits and AIA-accredited presentations. To earn AIA learning units for your personnel, or to schedule an appointment to discuss our building envelope materials, call your local sales office at (800) 342-5976 or email us directly at info@wrmeadows.com.

Our website features guide specifications, sustainability information, safety data sheets, project profiles, and more. You can also visit our website to view data sheets and view and order additional informational brochures. Visit www.wrmeadows.com to learn more.

Follow us on social media to see the latest and greatest news from W. R. MEADOWS. We'll announce our latest products, technology updates, and construction news. Follow us on LinkedIn, Facebook, X, Instagram, and YouTube.



W. R. MEADOWS BUILDING ENVELOPE SYSTEM



MEL-ROL® LM
Liquid Waterproofing
Membrane



MEL-ROL
Rolled, Self-Adhering
Waterproofing Membrane



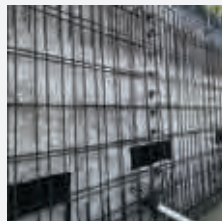
PERMINATOR®
10, 15, and 20 Mil
Underslab Vapor Barrier



AIR-SHIELD™
Air/Vapor and Liquid
Moisture Barrier
(Vapor Permeable Versions Available)



AIR-SHIELD
LIQUID FLASHING
Liquid Flashing Membrane



PRECON®
Pre-Applied/Underslab
Waterproofing Membrane

VAPOR BARRIERS

Uncontrolled water vapor through concrete slabs has cost building owners, designers and contractors billions of dollars. This moisture infiltration into structures contributes to the proliferation of mold, mildew and fungus and leads to flooring system failures, including adhesive failures, warping, blistering and staining. In addition, water vapor migration carrying alkali can cause structural failure of the concrete when reinforcing steel is present.



W. R. MEADOWS offers the below vapor barriers to help control the damaging influx of water vapor.

For more detailed information on our products, please see our **Vapor Barriers #BR-4** brochure. W. R. MEADOWS also produces a full-line of accessories to be used with these products, including adhesives, mastics, and tapes.

PERMINATOR

Underslab Vapor Barrier

- Available in 10, 15, and 20 mil thicknesses
- Helps reduce the penetration of moisture and water vapor through the slab into the structure
- Helps reduce fungus, mildew, and mold

PERMINATOR EVOH

Underslab Gas Vapor Barrier

- Resistant to gasoline, oils, solvents, hydrocarbons, radon, and methane
- Seven-layer construction with EVOH gas barrier core
- Tough enough to withstand normal construction jobsite conditions and traffic ... will not crack, puncture, snag, split, or tear easily

PREMOULDED MEMBRANE[®] VAPOR SEAL WITH PLASMATIC[®] CORE (PMPC)

Vaporproofing/Waterproofing Membrane

- A virtually impermeable vaporproofing system with a perm rating of less than 0.002 perms, lowest in the industry
- The only true vapor barrier for horizontal applications, both waterproof and vaporproof
- Provides excellent tensile strength and puncture resistance

PRECON

Pre-Applied/Underslab Waterproofing Membrane

- Provides a waterproof seal between the membrane and poured concrete wall
- Helps prevent moisture migration into the structure

WATER PROOFING

Any time a concrete slab comes in contact with the soil surrounding the structure- whether in-slab on-grade construction, basements or crawlspaces- water intrusion is a common problem. These spaces are interrupting the hydrological cycle and are continuously combating water runoff and moisture movement through the soil. W. R. MEADOWS provides a variety of waterproofing solutions, including liquid-

applied, sheet-applied, and drainage systems, that will help block moisture from entering the structure.

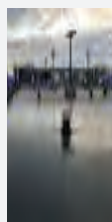
For more detailed information on our line of products, please see our WATERPROOFING #BR-3 brochure. We also produce a full- line of accessories to be used with these products, including adhesives, protection courses, and drainage.



MEL-ROL®

Rolled, Self-Adhering Waterproofing Membrane

- Easy-to-apply system for maximum productivity
- Provides additional overlap security



HYDRALASTIC™ 836 SL

Cold-Applied, Moisture Cured, Waterproofing Membrane

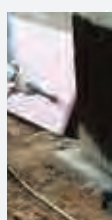
- Cured with water addition in as little as two hours
- Fast curing at 75° F (23° C)



PRECON®

Pre-Applied/Underslab Waterproofing Membrane

- Provides lowest water vapor transmission (WVT) rating
- May be used in horizontal applications for both underslab waterproofing & vaporproofing



MEL-ROL LM

Single-Component, Water-Based, Polymer-Modified, Cold-Applied, Waterproofing Membrane

- Bonds to green concrete
- Will not become brittle with age



CLAY-TITE™

Waterproofing Membrane

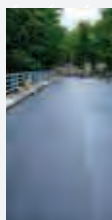
- Provides a tough, durable waterproof seal
- Self seals under hydrostatic conditions
- Outstanding performance when used in high waterhead conditions



VERTIBARRIER NS

Cold-Applied, Moisture-Cured, Waterproofing Membrane

- Cured with water addition in as little as two hours
- Can be recoated same day for two-coat application
- Fast curing at 75° F (23° C)



MEL-DEK™

Deck Waterproofing System

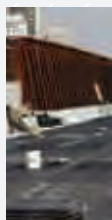
- Can withstand hot asphalt overlays
- Membrane-to-membrane weld at seams for positive, monolithic protection



MEADOW-PRUF® CO-SPRAY

Cold-Applied Liquid Waterproofing Membrane

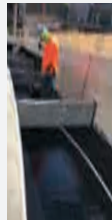
- Develops rapid resistance to rain wash off and can be applied in cool and damp conditions
- Less reliant on ambient film-forming condition
- Co-spray application method greatly extends the seasonal application window



VIBRAFLEX®

Asphaltic Panel Bridge Deck Protection Course

- Save 40 to 60% compared to plank products
- Fewer joints eliminate infiltration of fines and resulting damage



HRM 714

Hot-Applied Rubberized Waterproofing Membrane

- Blends toughness with low temperature flexibility
- Very low absorption and vapor permeance
- Prevents overheating rubber degradation



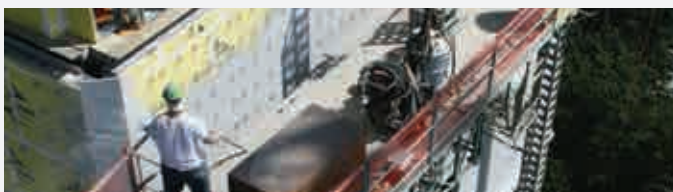
HYDRALASTIC 836

Cold-Applied, Single-Component Waterproofing

- Low odor, low shrinkage
- Bonds to both concrete and asphalt
- Skins over in 30 minutes; no dust pick up

AIR BARRIERS

Uncontrolled air leakage through the building envelope will affect the performance of the building materials within the wall assembly. Air will move through the building if there is a pressure difference across the building envelope. As a result, any hole or penetration in the building envelope can allow moisture-laden air to move through the wall. To prevent air movement through an exterior wall, a continuous air barrier system (or airflow retarder) must be installed. For this purpose,



W. R. MEADOWS has designed and manufactures the AIR-SHIELD line of air barriers.

For more detailed information on our line of products, please see our **AIR-SHIELD #BR-2** brochure. We also produce a full-line of accessories to be used with these products, including adhesives, flashings, and fabrics.

AIR-SHIELD

Self-Adhering Air/Vapor and Liquid Moisture Barrier

- Low permeability: prevents transmission of air and inhibits moisture vapor through porous building materials
- Provides a complete above-grade air, vapor, and water barrier on a variety of construction materials
- Controlled thickness membrane is ideal for air barrier applications

AIR-SHIELD ALUMINUM SHEET MEMBRANE

Self-Adhering Air/Vapor and Liquid Moisture Barrier

- Low permeability: prevents transmission of air and inhibits moisture vapor through porous building materials
- Provides excellent adhesion to prepared substrates
- Offers a 12-month exposure time

AIR-SHIELD LM

Liquid Membrane Air/Vapor and Liquid Moisture Barrier

- Applied through co-spray method
- Develops rapid resistance to rain wash-off
- Can be applied in cool and damp conditions

AIR-SHIELD LMP

Liquid Membrane Vapor Permeable Air Barrier

- Non-asphaltic: meets stringent fire codes and requirements
- High permeability: allows transmission of moisture vapor through porous building materials
- Highly flexible: bridges cracks which may form in the substrate
- UV resistant

AIR-SHIELD LSR

Liquid Membrane Air/Vapor and Liquid Moisture Barrier

- Liquid synthetic rubber formulation
- Non-asphaltic: meets stringent fire codes and requirements
- Low permeability: prevents transmission of air and inhibits moisture and vapor from passing through porous building materials
- Highly flexible: bridges cracks which may form in the substrate

AIR-SHIELD SMP

Sheet Membrane Vapor Permeable Air Barrier

- High permeability: allows transmission of moisture vapor through porous building materials
- Helps reduce air and moisture intrusion
- Bonds easily and securely to a variety of building materials: no primer required

AIR-SHIELD TMP

Liquid Membrane Thin Film Permeable Air Barrier

- High permeability: allows the transmission of moisture vapor through porous building materials
- Highly flexible: bridges cracks which may form in the substrate
- UV resistant



800.342.5976

wrmeadows.com

info@wrmeadows.com

[@wrmeadows](#)

[#wrmeadows](#)



P.O. Box 338, HAMPSHIRE, IL 60140

P: 800.342.5976

F: 847.683.4544